



## Demonstrating the Value of Academic Libraries in Times of Uncertainty: A Research Agenda for Student Learning and Success

**Professor Lynn Silipigni Connaway**

**Senior Research Scientist and Director of User Research**

**April 7, 2017 (Friday)**

**4:30 – 5:45 pm**

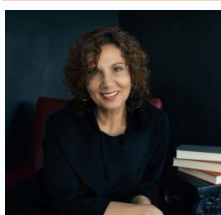
**RM 203, Runme Shaw Building, HKU**

**(Chair: Dr Samuel Chu)**

### **Abstract**

Academic librarians need to articulate library value in ways that resonate with higher education stakeholders. A project conducted by OCLC Research on behalf of the Association of College and Research Libraries (ACRL) examines how librarians effectively can articulate value and become active participants in decision-making at their academic institutions. More research is needed to address an area critical to the higher education sector - institutional priorities for student learning and success. Interviews with US academic librarians and provosts and an analysis of the higher education and library and information science literature provide examples and recommendations for academic library researchers and practitioners. A research agenda consisting of approximately 10-15 future-oriented, key, outstanding research questions that the literature and interview data suggest are being developed for academic library researchers and librarians to explore. The possible parameters for each question are defined and the related scholarly work is identified in a way that is accessible to practitioner-scholars so they are able to articulate their research questions, design studies, and communicate results. With the changing higher education landscape, the results of this project are quite timely.

### **About the speaker**



Prof Lynn Silipigni Connaway, Ph.D., is a Senior Research Scientist and Director of User Research at OCLC Research. She is the President of the Association of Information Science & Technology (ASIS&T) and was the Chair of the American Library Association (ALA) Association of College and Research Libraries (ACRL) Value of Academic Libraries Committee. Lynn held the Chair of Excellence position at the Departamento de Biblioteconomía y Documentación at the Universidad Carlos III de Madrid and collaborated with the faculty on user-centered research. Prof Connaway was a Visiting Researcher in the Department of Information Studies, University of Sheffield scholar and a Visiting Scholar at the Royal School of Library and Information Science, Copenhagen, Denmark. She has received research funding from the IMLS in the US and Jisc and the Arts and Humanities Research Council in the UK. She leads OCLC Research in the digital visitors and residents project and currently is the co-principal investigator of an IMLS-funded project with the University of Florida and Rutgers, The State University of New Jersey, to investigate how late primary, secondary, and community college STEM students judge credibility of digital resources in absence of human sources. Lynn also is the project lead on ALA ACRL "Action-Oriented Research Agenda on Library Contributions to Student Learning and Success." Prof Connaway is the co-author of the 4<sup>th</sup> and 5<sup>th</sup> editions of *Basic Research Methods for Librarians* and of the 6<sup>th</sup> edition, titled *Research Methods in Library and Information Science*. She has authored numerous other publications and frequently is an international and national speaker on how individuals get their information and engage with technology and the assessment and development of user-centered library services. Prior to joining OCLC Research, she was the Vice-President of Research and Library Systems at NetLibrary, the director of the Library and Information Services Department at the University of Denver, and on the faculty of the Library and Information Science program at the University of Missouri, Columbia. To find out more about Prof Connaway, visit <http://www.oclc.org/research/people/connaway.html>.

*All are welcome. For enquiry, please contact Faculty of Education at 3917 2395.*