



Research Methods in Library and Information Science: Trends and Tips for Researchers, Students, & Professionals

Professor Lynn Silipigni Connaway

Senior Research Scientist and Director of User Research

OCLC Research

March 31, 2017 (Friday)

5 – 6:15 pm

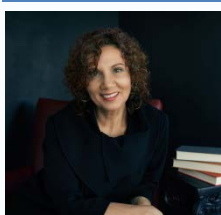
RM 202, Runme Shaw Building, HKU

(Chair: Dr Samuel Chu)

Abstract

The new edition of *Research Methods in Library and Information Science* is a practical and comprehensive introduction to research design, presenting up-to-date coverage of the principles and data collection techniques for quantitative and qualitative research methods — along with the advantages and disadvantages of each. The new edition includes added sections featuring the voices of prominent LIS scholars, researchers, and editors. “Voices of the Experts” text boxes provide researchers’ advice on specific methods and identify the most important or most valuable reasons for using a particular method and software for analysis—such as NVivo, SurveyMonkey, and log capture. The book also includes instruction on conducting research using an array of tools as well as guidance in critically reading and evaluating research publications, proposals, and reports. Prof Connaway, the co-author of the book, will provide an overview of the foundation of research practice and process for library and information science researchers, students and professionals. She will review trends and tips for LIS research, to highlight some of the book’s comprehensive coverage of what is new and exciting for beginning scholars as well as those wishing to learn about current trends.

About the speaker



Prof Lynn Silipigni Connaway, Ph.D., is a Senior Research Scientist and Director of User Research at OCLC Research. She is the President of the Association of Information Science & Technology (ASIS&T) and was the Chair of the American Library Association (ALA) Association of College and Research Libraries (ACRL) Value of Academic Libraries Committee. Lynn held the Chair of Excellence position at the Departamento de Biblioteconomía y Documentación at the Universidad Carlos III de Madrid and collaborated with the faculty on user-centered research. Prof Connaway was a Visiting Researcher in the Department of Information Studies, University of Sheffield scholar and a Visiting Scholar at the Royal School of Library and Information Science, Copenhagen, Denmark. She has received research funding from the IMLS in the US and Jisc and the Arts and Humanities Research Council in the UK. She leads OCLC Research in the digital visitors and residents project and currently is the co-principal investigator of an IMLS-funded project with the University of Florida and Rutgers, The State University of New Jersey, to investigate how late primary, secondary, and community college STEM students judge credibility of digital resources in absence of human sources. Lynn also is the project lead on ALA ACRL "Action-Oriented Research Agenda on Library Contributions to Student Learning and Success." Prof Connaway is the co-author of the 4th and 5th editions of *Basic Research Methods for Librarians* and of the 6th edition, titled *Research Methods in Library and Information Science*. She has authored numerous other publications and frequently is an international and national speaker on how individuals get their information and engage with technology and the assessment and development of user-centered library services. Prior to joining OCLC Research, she was the Vice-President of Research and Library Systems at NetLibrary, the director of the Library and Information Services Department at the University of Denver, and on the faculty of the Library and Information Science program at the University of Missouri, Columbia. To find out more about Prof Connaway, visit <http://www.oclc.org/research/people/connaway.html>.

All are welcome. For enquiry, please contact Faculty of Education at 3917 2395.